

# Dry Disconnect Couplings



# Dry Disconnect Coupling



## Why use our Dry Disconnect Couplings ?

- **Safety First !**

Our Dry Disconnect couplings are designed to protect the operators and the environment during the loading and unloading fluid process. The bidirectional sealing design ensures a safe and simple disassembly process.

- **Solutions.**

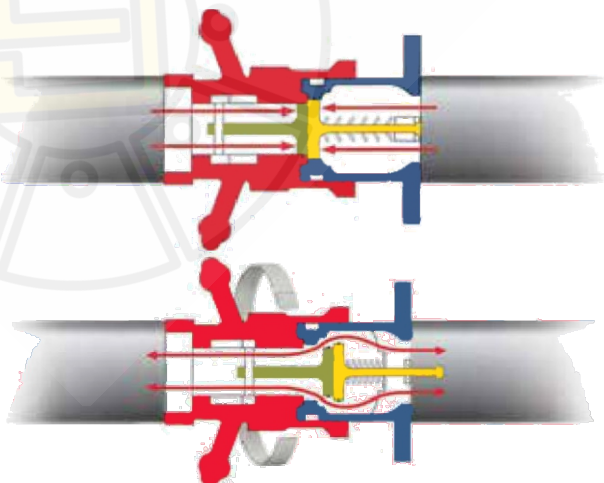
We can supply a large range of material and sizes.

- **Multi-Brands compatibility.**

Our Dry Disconnect Couplings are designed according NATO STANAG 3756 this allows us to be compatible with most brands.

## How our Dry Disconnect Couplings works ?

1. Turning the Hose Unit by 15° clockwise locks the units together.
2. The valves are still closed
3. Turning the Hose Unit by 90° opens the inside valves.
4. To close the valves and unlock the Units , reverse the process.



## Advantages

- Avoid the loss of fluids during locking and unlocking connection process.
- Reduce the possibility of Human error in fluid transfer operation (mixing products)
- Ease of handling
- Protect the Human health
- Protect the Environment

# Dry Disconnect Couplings

## Materials:

Stainless Steel (1.4408)

Aluminium

Brass

Other on request

## Working Pressure:

Stainless Steel = 25 bars (363 psi)

Aluminium = 10 bars (145 psi)

Brass WP = 16 bars (232 psi)

## Test Pressure:

Stainless Steel = 37.5 bars (544 psi)

Aluminium = 15 bars (218 psi)

Brass = 24 bars (348 psi)

## O-rings Seal:

FPM (-35°C / +140°C) for SS

NBR (-30°C / +100°C) for AL

## Flat Seal :

PTFE (-25°C / +250°C)

## End connections :

BSPP 、 NPT 、 ANSI 150 Lbs Flange 、

Other Thread and Flange  
types on request.

## Certificates :

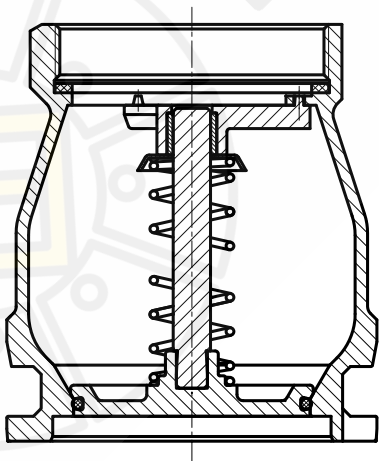
ATEX , PED , 3.1 Material certificate



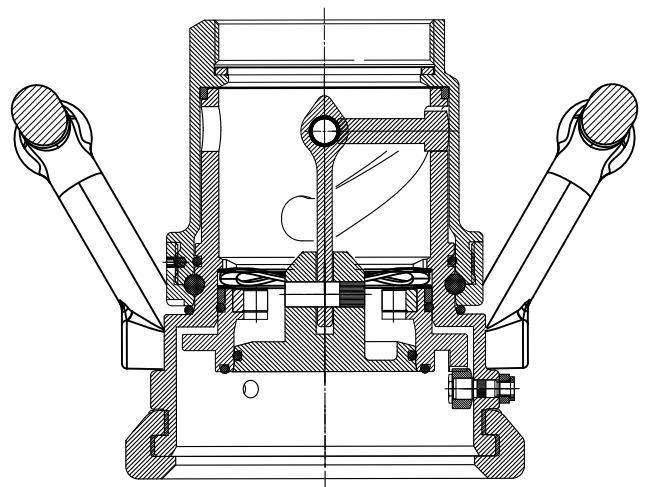
## CERTIFICATES

## PRODUCT SKETCH

TANK UNIT (TU)



HOSE UNIT (TH)



## LDDC-HOSE UNIT

Name	Size ( mm )	Thread	Code	Thread	Code	Material
TH56	1"	BSPP ISO 228-1"	L1601087	NPT	L1601051	SS 1.4408
TH70	2"	BSPP ISO 228-2"	L1601026	NPT	L1601099	SS 1.4408
TH105	2 1/2"	BSPP ISO 228-2 1/2"	L1601005	NPT	L1601104	SS 1.4408
TH119	3"	BSPP ISO 228-3"	L1601057	NPT	L1601114	SS 1.4408
TH164	4"	BSPP ISO 228-4"	L1601018	NPT	L1601115	SS 1.4408
TH238	6"	BSPP ISO 228-6"	L1601182	NPT	L1601183	SS 1.4408
TH272	8"	BSPP ISO 228-8"	L1601218	NPT	L1601219	SS 1.4408
TH56	1"	BSPP ISO 228-1"	L1601168	NPT	L1601166	BR
TH70	2"	BSPP ISO 228-2"	L1601068	NPT	L1601154	BR
TH105	2 1/2"	BSPP ISO 228-2 1/2"	L1601069	NPT	L1601170	BR
TH119	3"	BSPP ISO 228-3"	L1601129	NPT	L1601070	BR
TH164	4"	BSPP ISO 228-4"	L1601137	NPT	L1601071	BR
TH238	6"	BSPP ISO 228-6"	L1601206	NPT	L1601207	BR
TH272	8"	BSPP ISO 228-8"	L1601214	NPT	L1601215	BR
TH56	1"	BSPP ISO 228-1"	L1601097	NPT	L1601046	AL
TH70	2"	BSPP ISO 228-2"	L1601047	NPT	L1601106	AL
TH105	2 1/2"	BSPP ISO 228-2 1/2"	L1601145	NPT	L1601146	AL
TH119	3"	BSPP ISO 228-3"	L1601113	NPT	L1601116	AL
TH164	4"	BSPP ISO 228-4"	L1601050	NPT	L1601081	AL
TH238	6"	BSPP ISO 228-6"	L1601202	NPT	L1601203	AL
TH272	8"	BSPP ISO 228-8"	L1601210	NPT	L1601211	AL



## LDDC-TANK UNIT

Name	Size ( mm )	Thread	Code	Thread	Code	Material
TU56	1"	BSPP ISO 228-1"	L1601093	NPT	L1601171	SS 1.4408
TU70	2"	BSPP ISO 228-2"	L1601032	NPT	L1601152	SS 1.4408
TU105	2 1/2"	BSPP ISO 228-2 1/2"	L1601044	NPT	L1601103	SS 1.4408
TU119	3"	BSPP ISO 228-3"	L1601034	NPT	L1601111	SS 1.4408
TU164	4"	BSPP ISO 228-4"	L1601024	NPT	L1601112	SS 1.4408
TU238	6"	BSPP ISO 228-6"	L1601178	NPT	L1601179	SS 1.4408
TU272	8"	BSPP ISO 228-8"	L1601216	NPT	L1601217	SS 1.4408
TU56	1"	BSPP ISO 228-1"	L1601167	NPT	L1601165	BR
TU70	2"	BSPP ISO 228-2"	L1601064	NPT	L1601159	BR
TU105	2 1/2"	BSPP ISO 228-2 1/2"	L1601065	NPT	L1601169	BR
TU119	3"	BSPP ISO 228-3"	L1601134	NPT	L1601066	BR
TU164	4"	BSPP ISO 228-4"	L1601142	NPT	L1601067	BR
TU238	6"	BSPP ISO 228-6"	L1601204	NPT	L1601205	BR
TU272	8"	BSPP ISO 228-8"	L1601212	NPT	L1601213	BR
TU56	1"	BSPP ISO 228-1"	L1601098	NPT	L1601039	AL
TU70	2"	BSPP ISO 228-2"	L1601001	NPT	L1601002	AL
TU105	2 1/2"	BSPP ISO 228-2 1/2"	L1601040	NPT	L1601102	AL
TU119	3"	BSPP ISO 228-3"	L1601041	NPT	L1601117	AL
TU164	4"	BSPP ISO 228-4"	L1601042	NPT	L1601083	AL
TU238	6"	BSPP ISO 228-6"	L1601200	NPT	L1601201	AL
TU272	8"	BSPP ISO 228-8"	L1601208	NPT	L1601209	AL





**LDDC-HOSE UNIT-Flange**

Name	Size	Flange Type	Code	Material
TH56	1"	Flange ANSI 150 Lbs	L1603003	SS 1.4408
TH70	2"	Flange ANSI 150 Lbs	L1603004	SS 1.4408
TH105	2 1/2"	Flange ANSI 150 Lbs	L1603005	SS 1.4408
TH119	3"	Flange ANSI 150 Lbs	L1603006	SS 1.4408
TH164	4"	Flange ANSI 150 Lbs	L1603007	SS 1.4408
TH238	6"	Flange ANSI 150 Lbs	L1603034	SS 1.4408
TH272	8"	Flange ANSI 151 Lbs	L1603040	SS 1.4408
TH56	1"	Flange ANSI 150 Lbs	L1603023	BR
TH70	2"	Flange ANSI 150 Lbs	L1603024	BR
TH105	2 1/2"	Flange ANSI 150 Lbs	L1603025	BR
TH119	3"	Flange ANSI 150 Lbs	L1603026	BR
TH164	4"	Flange ANSI 150 Lbs	L1603027	BR
TH238	6"	Flange ANSI 150 Lbs	L1603036	BR
TH272	8"	Flange ANSI 151 Lbs	L1603042	BR
TH56	1"	Flange ANSI 150 Lbs	L1603013	AL
TH70	2"	Flange ANSI 150 Lbs	L1603014	AL
TH105	2 1/2"	Flange ANSI 150 Lbs	L1603015	AL
TH119	3"	Flange ANSI 150 Lbs	L1603016	AL
TH164	4"	Flange ANSI 150 Lbs	L1603017	AL
TH238	6"	Flange ANSI 150 Lbs	L1603038	AL
TH272	8"	Flange ANSI 150 Lbs	L1603044	AL

\* Other Flange types on request



**LDDC-TANK UNIT-Flange**

Name	Size	Flange Type	Code	Material
TU56	1"	Flange ANSI 150 Lbs	L1603008	SS 1.4408
TU70	2"	Flange ANSI 150 Lbs	L1603009	SS 1.4408
TU105	2 1/2"	Flange ANSI 150 Lbs	L1603010	SS 1.4408
TU119	3"	Flange ANSI 150 Lbs	L1603011	SS 1.4408
TU164	4"	Flange ANSI 150 Lbs	L1603012	SS 1.4408
TU238	6"	Flange ANSI 150 Lbs	L1603033	SS 1.4408
TU272	8"	Flange ANSI 150 Lbs	L1603039	SS 1.4408
TU56	1"	Flange ANSI 150 Lbs	L1603028	BR
TU70	2"	Flange ANSI 150 Lbs	L1603029	BR
TU105	2 1/2"	Flange ANSI 150 Lbs	L1603030	BR
TU119	3"	Flange ANSI 150 Lbs	L1603031	BR
TU164	4"	Flange ANSI 150 Lbs	L1603032	BR
TU238	6"	Flange ANSI 150 Lbs	L1603035	BR
TU272	8"	Flange ANSI 150 Lbs	L1603041	BR
TU56	1"	Flange ANSI 150 Lbs	L1603018	AL
TU70	2"	Flange ANSI 150 Lbs	L1603019	AL
TU105	2 1/2"	Flange ANSI 150 Lbs	L1603020	AL
TU119	3"	Flange ANSI 150 Lbs	L1603021	AL
TU164	4"	Flange ANSI 150 Lbs	L1603022	AL
TU238	6"	Flange ANSI 150 Lbs	L1603037	AL
TU272	8"	Flange ANSI 150 Lbs	L1603043	AL

\* Other Flange types on request

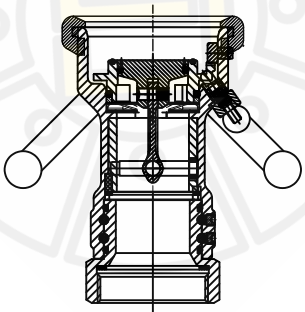


## Female Cap

Name	Size	Code	Material
TH56	1"	L1601161	AL
TH70	2"	L1601084	AL
TH105	2 1/2"	L1601150	AL
TH119	3"	L1601085	AL
TH164	4"	L1601086	AL
TH238	6"	-	AL
TH272	8"	-	AL
TH56	1"	-	BR
TH70	2"	-	BR
TH105	2 1/2"	-	BR
TH119	3"	L1601173	BR
TH164	4"	L1601175	BR
TH238	6"	-	BR
TH272	8"	-	BR

## Male Cap

Name	Size	Code	Material
TU56	1"	L1601162	AL
TU70	2"	L1601082	AL
TU105	2 1/2"	L1601151	AL
TU119	3"	L1601037	AL
TU164	4"	L1601012	AL
TU238	6"	-	AL
TU272	8"	-	AL
TU56	1"	-	BR
TU70	2"	-	BR
TU105	2 1/2"	-	BR
TU119	3"	L1601172	BR
TU164	4"	L1601174	BR
TU238	6"	-	BR
TU272	8"	-	BR



## LDDC-HOSE UNIT with lock

Name	Size ( mm )	Thread	Code	Material
TH70	2"	BSPP ISO 228-2"	L1601224	AL

\* more couplings size and material on request

To serve what customers need.

Dry Cryogenic coupling

## Luxecasting Dry Cryogenic Couplings

Size	Materials	End connections	working temperature	Seal
1"-6"	SS	Thread and Flange	-196°	PTFE

### Application scope

- Cryogenic container
- LNG fuel filling
- Low temperature highway and railway vehicles
- LNG storage and transportation ship
- Corresponding gas phase recovery pipeline above

Materials: Stainless Steel (1.4408)

End connections : NPT 、 ANSI 150 Lbs Flange 、  
Other Thread and Flange

working temperature: Minimum - 196°

# LDCC





## Luxecasting Dry aviation Couplings

Size	Materials	End connections	working pressure	Seal
2 1/2"	SS AL	Thread and Flange	10bar	FKM /NBR

### Preponderance

- When filling oil tank cars, railway tank cars and tank containers, ensure that the plug-in joint has no medium leakage
- Minimize leakage and product loss, and protect the environment from harmful gases and liquids
- Convenient and fast connection can save time and service, reliability and easy maintenance, and save investment
- According to European ped and ATEX standards and international ADR standards

Materials: SS(1.4408) AL

Seal: FKM NBR

End connections : Thread and Flange

working pressure: 10bar

# LDAC



## Luxecasting Dry Gas Couplings

Size	Materials	End connections	working pressure	Seal
1"-8"	SS	Thread and Flange	25bar	FKM /LT

LDGC is applicable to the connection and disconnection between hose, crane pipe, loading and unloading arm and mobile units such as tank car and railway tank car. During loading and unloading, the valves at both ends automatically opened and closed without leakage.

Luxecasting dry gas couplings is applicable to LPG loading and unloading pipelines in gas phase and liquid phase, such as propane, butane and other similar applications, which greatly reduces the incidence of loading and unloading accidents.

# LDGC

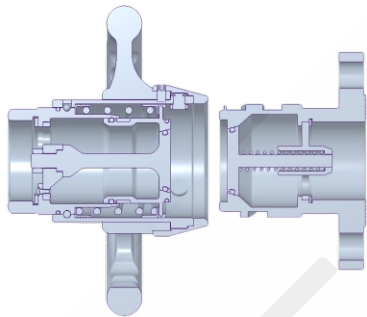


## LDEC Preponderance:

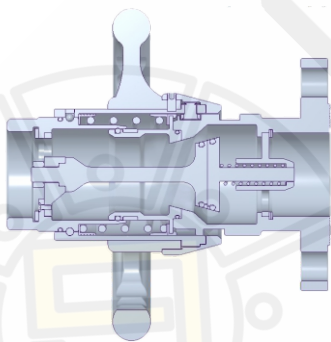
- It can be easily connected even when the pipeline is under pressure
- The hand wheel complies with ergonomics (diameter of DN40 and above with hand wheel)
- High mechanical transmission efficiency of cam curve
- Select high-quality materials with extensive chemical resistance
- Minimize the risk of pipeline disconnection

Size	Materials	End connections	working pressure	Seal
1"-3"	SS	螺纹、法兰	25bar	FKM NBR FFKM PTFE

## LDEC working principle:



Dry Evotek coupling female and male ends are separated, and the medium is blocked in the pipeline.



Dry Evotek coupling the connection state of the female end and the male end, and the medium flows.

Material:  
SS: 1.4404  
Hand wheel: PE

# LDEC

